

The image features a sunset background with silhouettes of two construction workers on a lift. One worker is on the left, and another is on the right, wearing a hard hat and a high-visibility vest. A blue banner is positioned at the top left, containing the company name and slogan.

# SARENS

NOTHING TOO HEAVY, NOTHING TOO HIGH

# OUR MISSION

---

At Sarens, we have the noble mission to be the reference in crane rental services, heavy lifting, and engineered transport for our clients. To do this, we deploy our **5 unwavering values:**

*Zeal  
for  
Excellence*

*Love  
for  
Tradition*

*Global  
Spirit*

*Brilliant  
Solutions*

*Dedication  
to  
Safety*

# HOW IT STARTED



OUR STORY



# HOW IT STARTED

---

IT ALL STARTED WITH A TREE TRUNK



**1930 - 1940**

GRANDFATHER SARENS PERFORMS  
FORESTRY WORKS

# HOW IT STARTED

---

IT ALL STARTED WITH A TREE TRUNK



**1955 (2 Sept)**

SARENS-DE COSTER NV

# HOW IT STARTED

---

IT ALL STARTED WITH A TREE TRUNK



**Expo 1958**  
WORLD FAIR

# HOW IT STARTED

---

IT ALL STARTED WITH A TREE TRUNK



**1960**

INVESTMENTS IN LIFTING  
& TRANSPORT EQUIPMENT

# HOW IT STARTED

---

IT ALL STARTED WITH A TREE TRUNK



**1970**

FIRST MODULAR TRAILERS  
& BARGES / ENTRY INTO THE UK



# HOW IT STARTED

---

IT ALL STARTED WITH A TREE TRUNK



**1980**

MOVING BRIDGES... & ENTRY INTO  
THE NETHERLANDS

# HOW IT STARTED

---

IT ALL STARTED WITH A TREE TRUNK



**1990**

FIRST WINDMILL ERECTIONS &  
ENTRY INTO GERMANY, POLAND  
AND THAILAND

# HOW IT STARTED

---

IT ALL STARTED WITH A TREE TRUNK



**CC8800 @ GORO NICKEL  
NEW CALEDONIA**

**2000**  
BREAKTHROUGH  
SARENS PROJECT WORKS

# HOW IT STARTED

---

IT ALL STARTED WITH A TREE TRUNK



**SGC\_120 @ FLAMANVILLE**

**2010**

CONTINUOUS INVESTMENTS &  
INNOVATION OF EQUIPMENT

# BOARD OF DIRECTORS

---

**78%** FAMILY BUSINESS,  
**22%** PRIVATE EQUITY

---

## **PRESIDENT**

Ludo Sarens

---

## **EXECUTIVE BOARD DIRECTORS**

Ludo Sarens  
Hendrik Sarens  
Marc Sarens  
Carl Sarens  
Guido Segers  
Henri Van Canneyt  
Cedric van Cauwenberghe

---

## **NON-EXECUTIVE DIRECTORS**

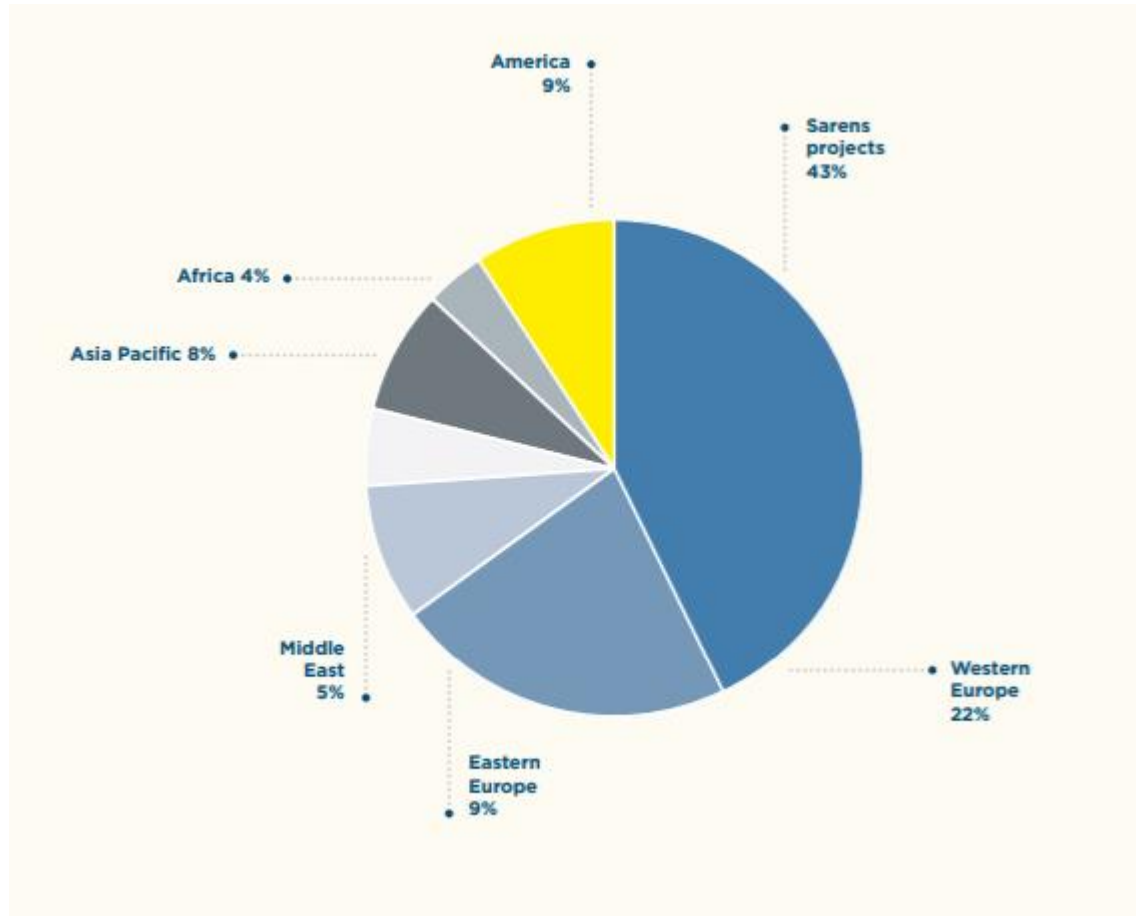
Alain Bernard  
Luc Sterckx

# TODAY

9 GEOGRAPHICAL REGIONS, 67 COUNTRIES, 100 OFFICES



# GLOBAL PRESENCE

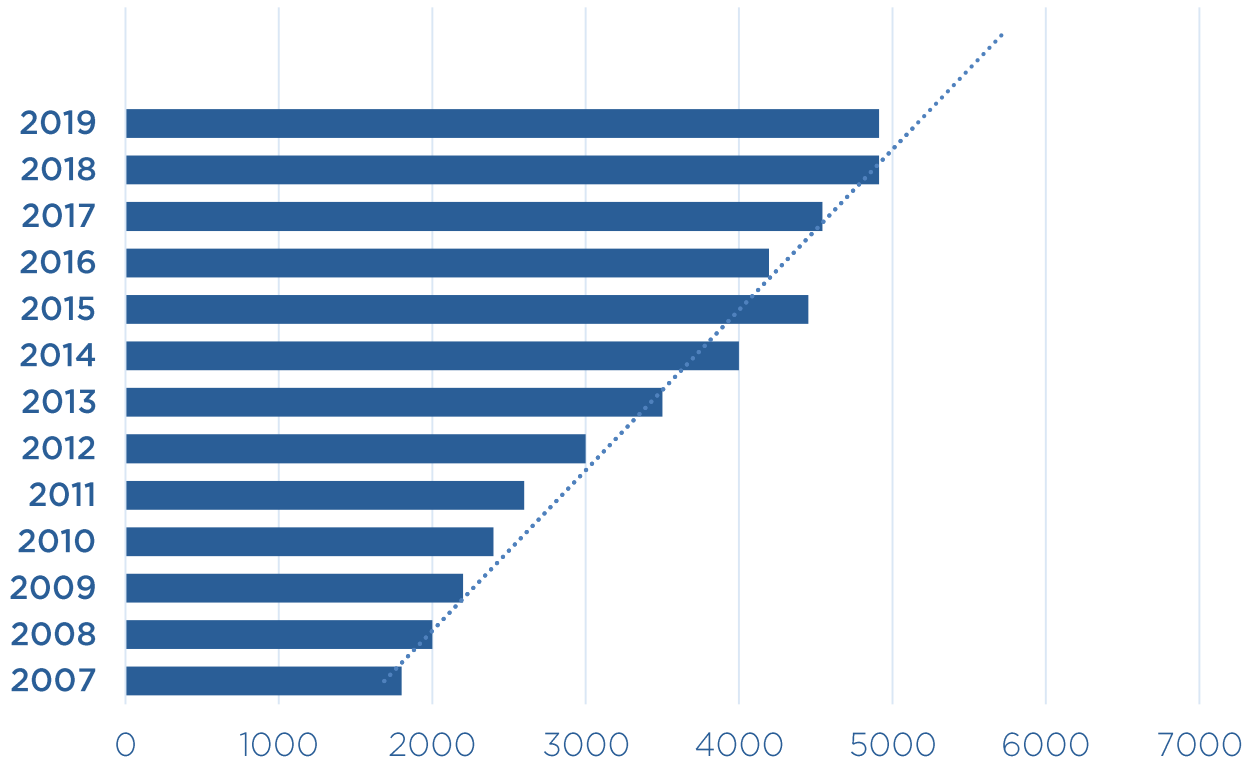


# OUR TEAM

HUMAN RESOURCES

#4.913

GLOBAL HEADCOUNT



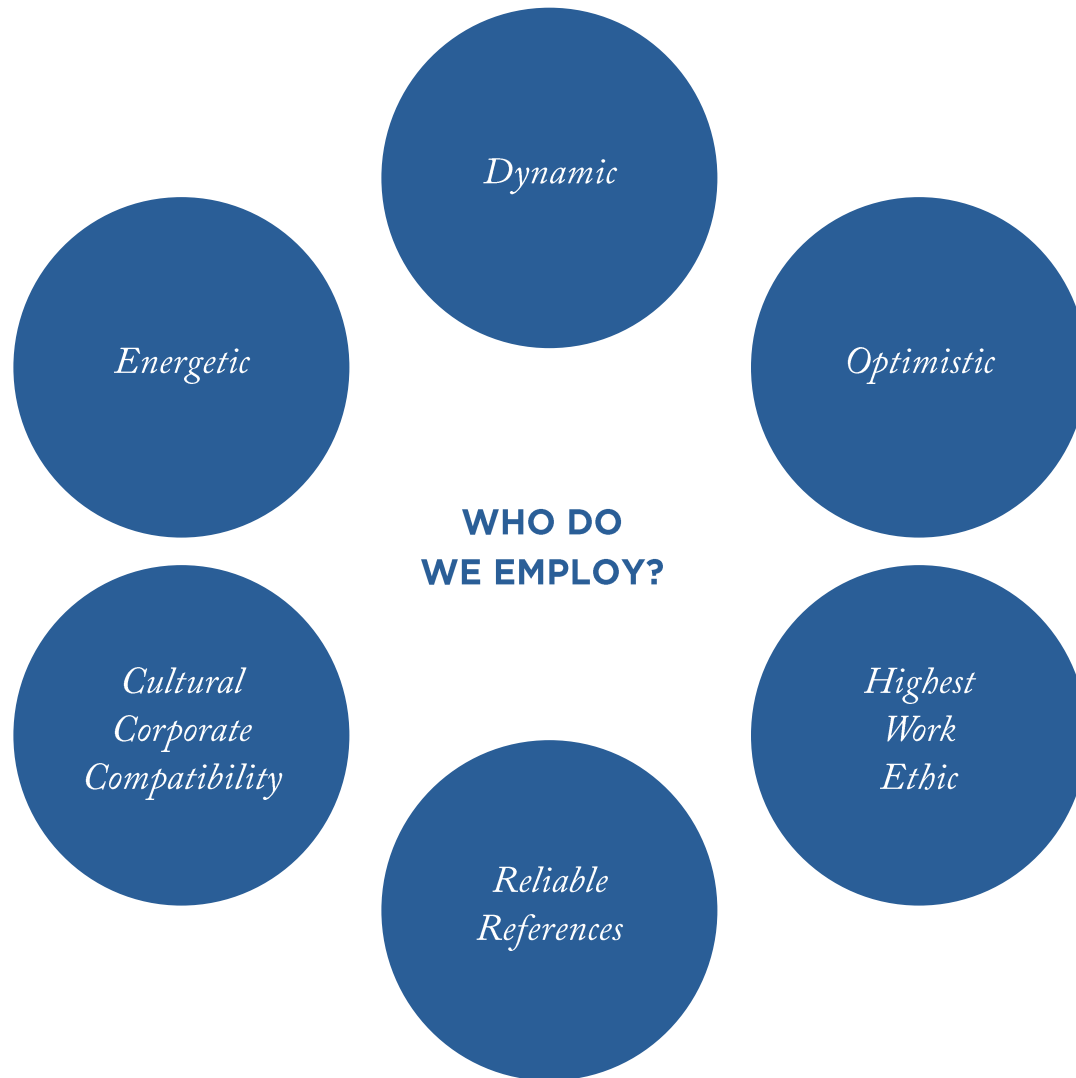


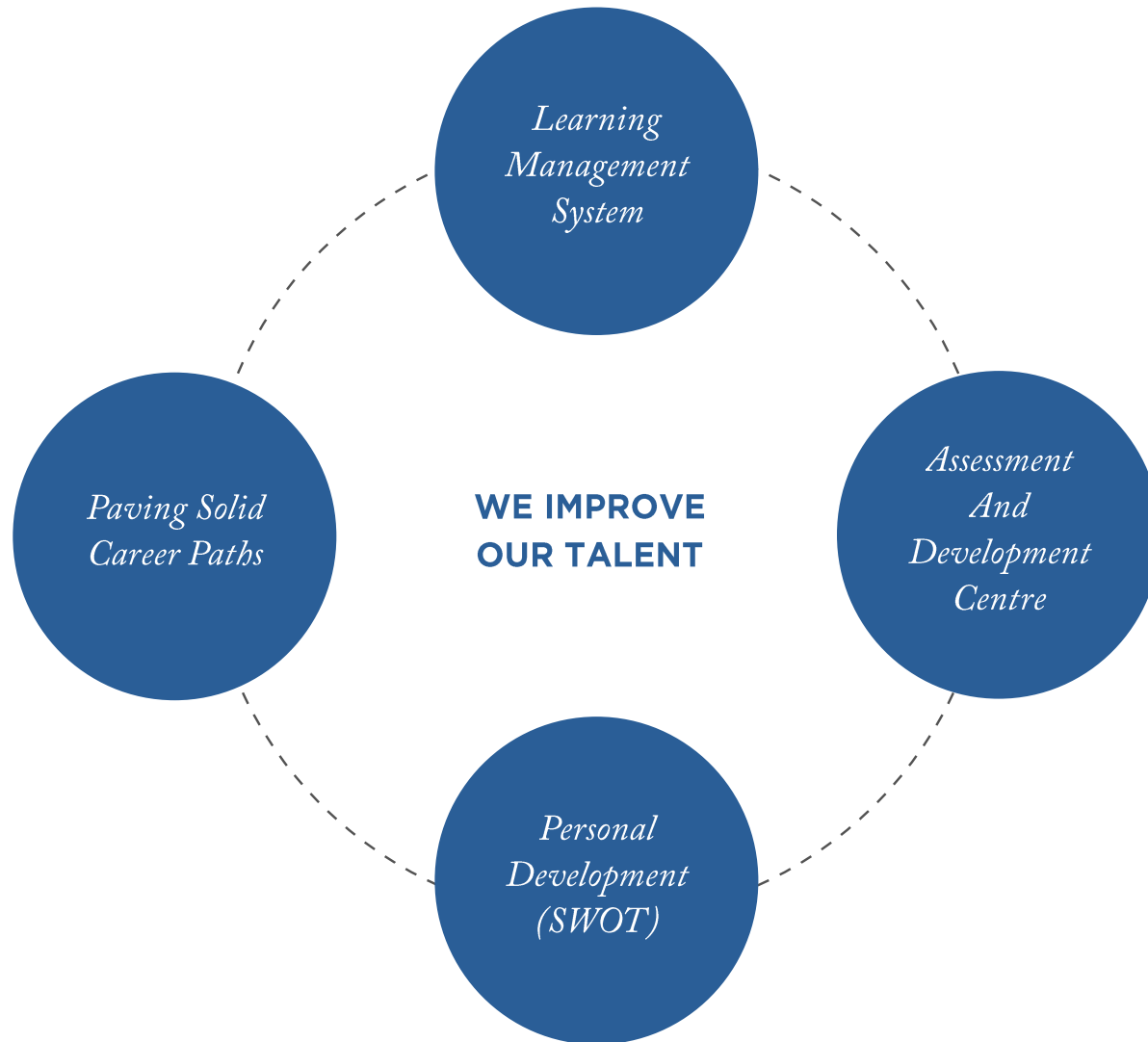
## MAIN PILLARS OF HUMAN RESOURCES

*Human  
Capital*

*International  
Mobility*

*Compensation  
& Benefits*

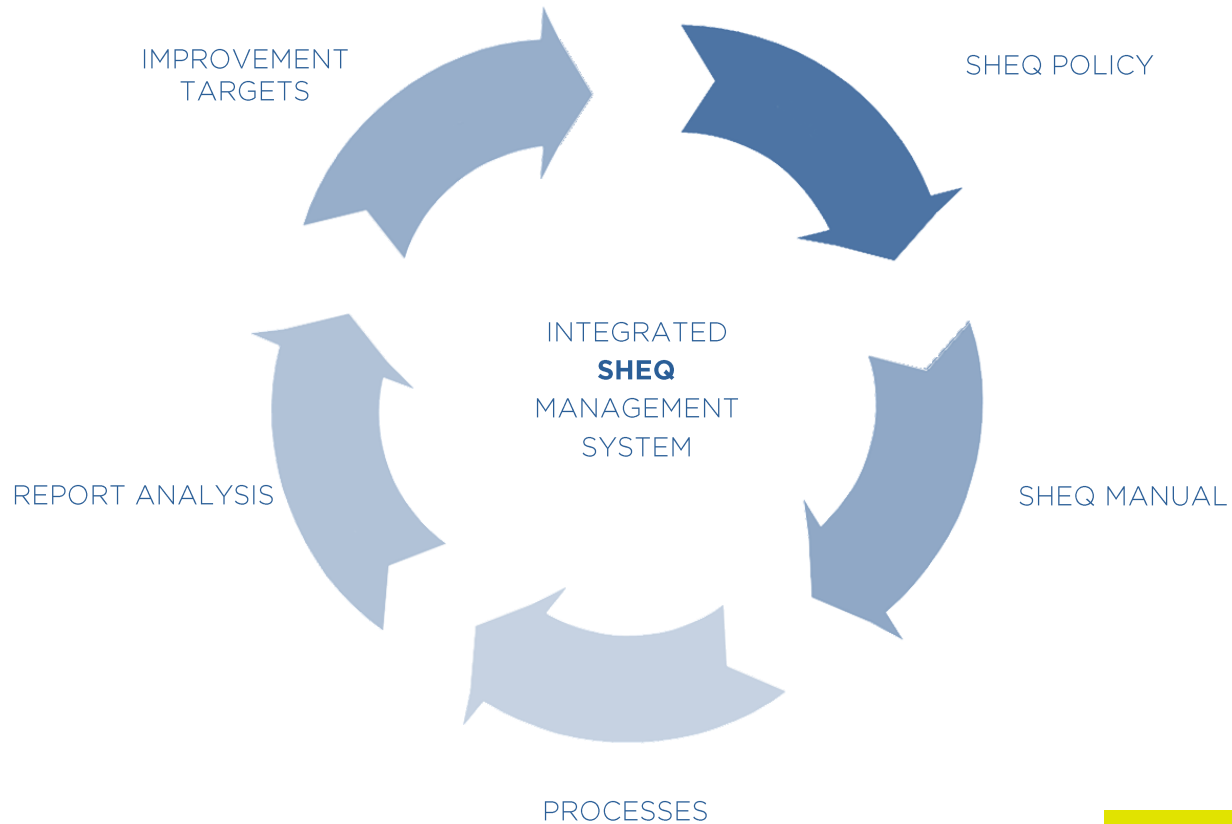




# SAFETY, HEALTH, ENVIRONMENTAL, QUALITY

SHEQ

## CONTINUOUS IMPROVEMENT



# STOP AND CONSULT

## LAST MINUTE RISK ANALYSIS



# #10 LIFE SAVING RULES

#1

## TO MANAGEMENT AND HIERARCHICAL LINE:

As a member of the Sarens Hierarchical Line, I accept that I am responsible for the continual improvement, leadership, welfare, and safety of all employees within the corporate scope of services, products, and activities.

## TO ALL EMPLOYEES:

As an employee of the Sarens organisation, I accept that I am responsible for my own safety and that of my work colleagues and must abide by the safe system of work and safe management systems as directed by my employer.

#2

When working at height I must always follow the safe system of work in line with current legislation and Sarens regulations.

#3

I must not tamper with or by-pass any Safety devices that are installed to ensure my safety or that of other operatives whilst equipment is in operation.

#4

I must follow the manufacturer's recommendations for the assembly and disassembly of all plant and equipment and must adhere to the permit to work at all times.

#5

I must be trained, certified, and authorised to operate plant, equipment, and machinery and must abide by the manufacturers rules.

#6

I must adhere at all times to current legislation and regulations regarding the structure and stability of all lifting equipment and special transport equipment.

#7

I must ensure that all work activities and operations that require additional control measures must be completed under a safe system of work and a Permit to Work authorized for use as specified.

#8

I understand and accept that Drugs and Alcohol are prohibited and not permitted in the workplace. Smoking is only allowed in designated smoking areas.

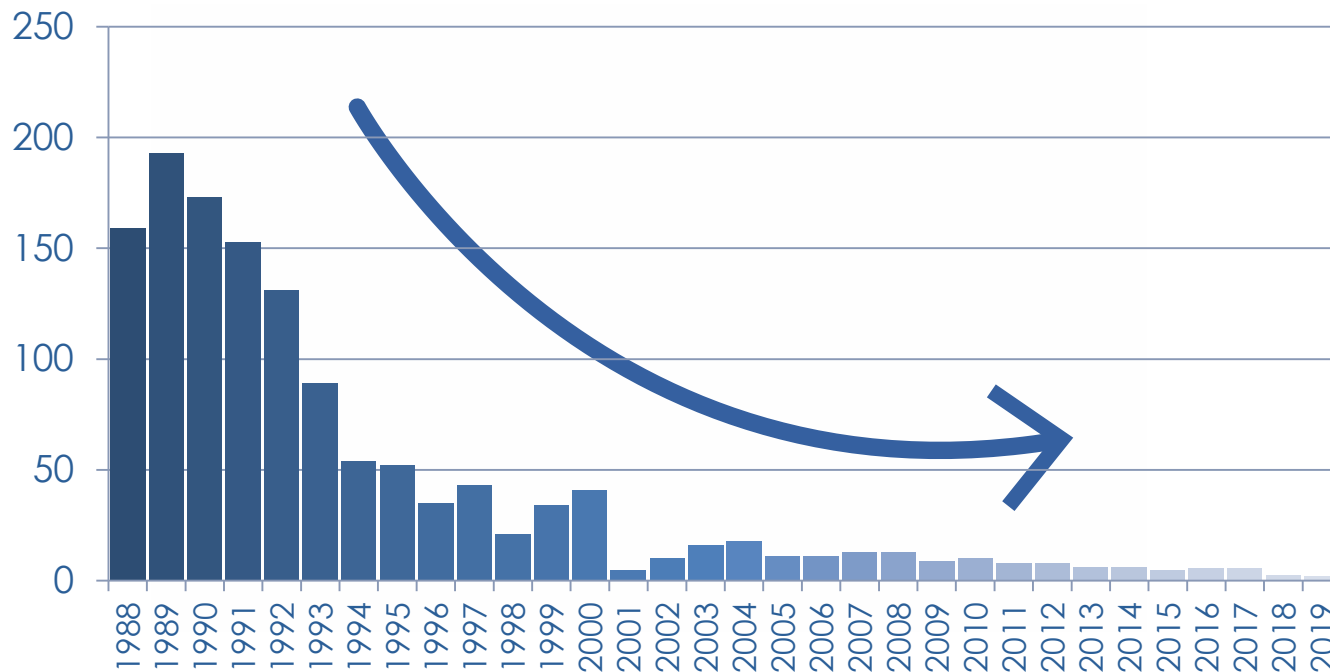
#9

I understand and accept that whilst I am driving vehicles, seat belts must be worn at all times and that it is prohibited to operate a mobile phone or any other device that may distract me as the driver.

#10

I understand that if, after my LMRA, the operations or work activities cannot be completed in a safe manner or if the circumstances have changed, a Stop and Consult procedure is required.

# FREQUENCY RATE - EU



# CONTRACT & RISK MANAGEMENT

## LEGAL & CONTRACT MANAGEMENT DEPARTMENT

### BEFORE SIGNED CONTRACT (SALES)



- APPROVAL SHEET (Bidding & Contracting Phase)
- AUTHORISATION CHART (Sales & Contracts)
- APPROVED GOLDEN RULES DEVIATION / ADHERENCE TO GOLDEN RULES
- M1\*

### SIGNATURE OF CONTRACT



### AFTER SIGNED CONTRACT (OPERATIONS)

- CONTRACT MANAGEMENT PLAN
- M1\* – M4

\* M1 may occur either before or after signed contract.





# OUR BUSINESS LINES

---



# OUR BUSINESS LINES

---

OUR BUSINESS LINES

**CRANE RENTAL SERVICES**

**HEAVY LIFTING &  
ENGINEERED TRANSPORT**

**MECHANICAL MAINTENANCE**

**TRADING**

# OUR BUSINESS LINES

---

OUR BUSINESS LINES

**CRANE RENTAL SERVICES**

**HEAVY LIFTING &  
ENGINEERED TRANSPORT**

**MECHANICAL MAINTENANCE**

**TRADING**

# CRANE RENTAL SERVICES

OUR BUSINESS LINES

Sarens has the biggest fleet of cranes and transport trailers in the market, all of which are available for rent. If you have a project that requires heavy lifting, Sarens will provide all you need.

Our cranes are quickly available, and can be deployed all around the world. We can provide with or without operator, for long and short term duration. Sarens will take care of everything: from maintenance to the necessary certificates, so you can perform your heavy lifting with the finest equipment, ready to go.



# OUR BUSINESS LINES

---

OUR BUSINESS LINES

CRANE RENTAL SERVICES

HEAVY LIFTING &  
ENGINEERED TRANSPORT

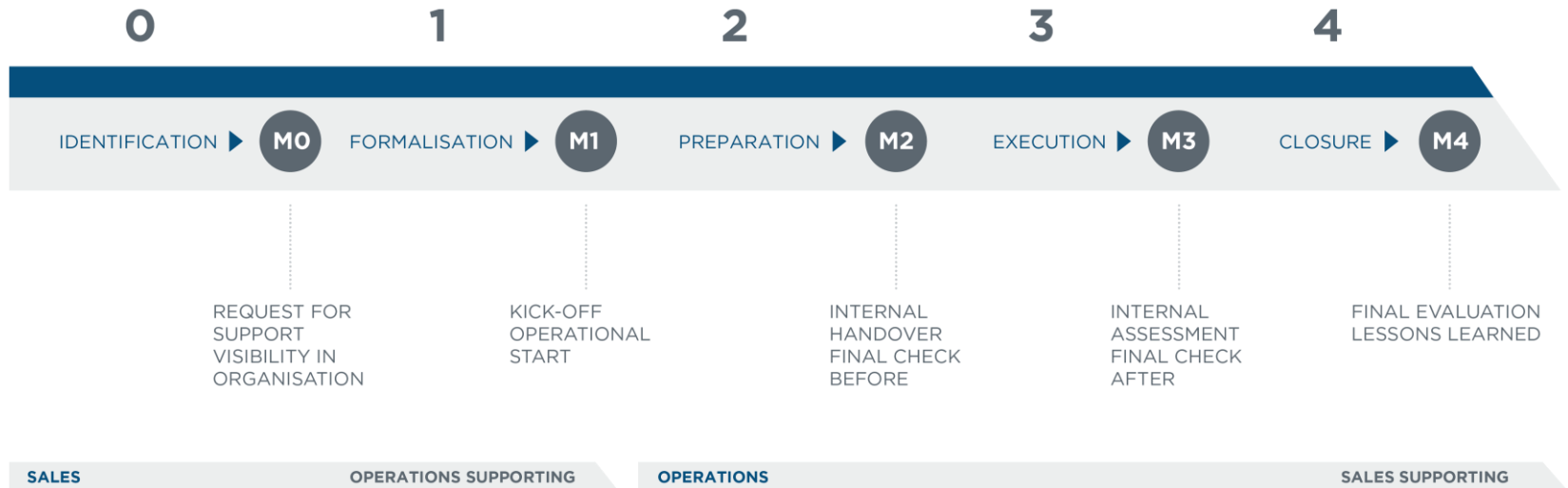
MECHANICAL MAINTENANCE

TRADING

# HEAVY LIFTING & ENGINEERED TRANSPORT

OUR BUSINESS LINES

## OUR PROJECT MANAGEMENT METHODOLOGY

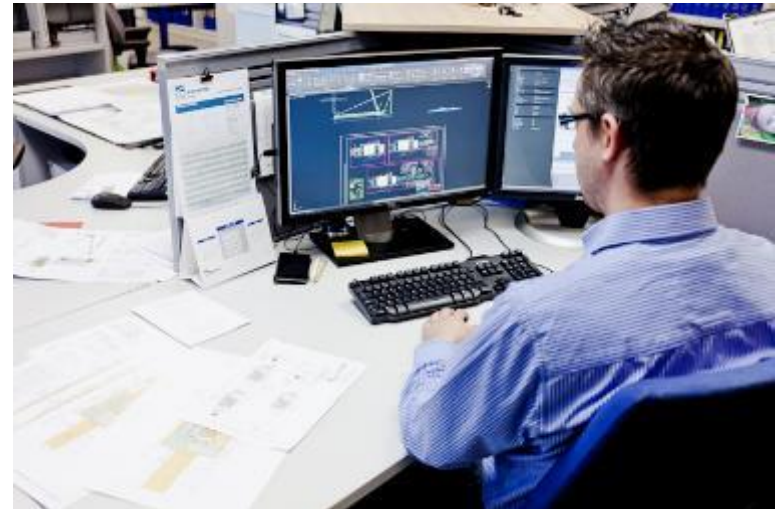


# HEAVY LIFTING & ENGINEERED TRANSPORT

OUR BUSINESS LINES

## WE OFFER ENGINEERING SERVICES

- Profound technical know-how
- Technical evaluation and preparation of projects
- Conceive, design, and validate new equipment
- Software development



# HEAVY LIFTING & ENGINEERED TRANSPORT

OUR BUSINESS LINES

## WE OFFER OPERATIONS & EXECUTION

- Optimal project management
- Compliance with clients' and Sarens' Policies
- Efficient deployment as defined in Sarens Project Management
- Maximum efficiency: minimize time and costs
- Client feedback





# OUR BUSINESS LINES

---

OUR BUSINESS LINES

**CRANE RENTAL SERVICES**

**HEAVY LIFTING &  
ENGINEERED TRANSPORT**

**MECHANICAL MAINTENANCE**

**TRADING**

# MECHANICAL MAINTENANCE

OUR BUSINESS LINES

Sarens owns a Belgian-based Sarens subsidiary, Samoco, a full-service assembly company providing multidisciplinary expertise.

WE OFFER TECHNICAL EXPERTISE FOR FACTORY INSTALLATIONS  
AND INDUSTRIAL EQUIPMENT

- Assembly
- Disassembly
- Maintenance
- Shutdowns
- Equipment erection
- Industrial moving
- Bundle extraction
- Port cranes and mechanical works



# OUR BUSINESS LINES

---

OUR BUSINESS LINES

**CRANE RENTAL SERVICES**

**HEAVY LIFTING &  
ENGINEERED TRANSPORT**

**MECHANICAL MAINTENANCE**

**TRADING**

# TRADING

Having a large asset basis worldwide, we can offer our clients a wide range of used equipment to fulfill their demands, and simultaneously enable Sarens to maintain a state-of-the-art fleet by continuously investing in new equipment and passing used equipment to interested buyers.

Buying our equipment has various advantages.

- Because of our enormous fleet, we can draw from our entire basis of equipment, all around the world.
- We offer with well-organised and safe transport options.
- When required, we can provide assistance with training and rigging.
- When buying from us, you talk directly to the end-owner. Our trading method makes mediators obsolete.

If you are interested in purchasing our equipment, contact [js@sarens.com](mailto:js@sarens.com) for any inquiries.



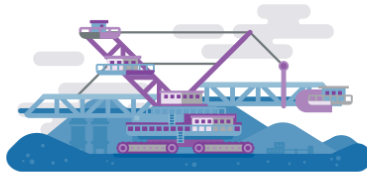
# OUR KEY MARKETS

OUR KEY MARKETS

OIL & GAS



MINING



CIVIL WORKS



OFFSHORE & MODULE YARDS



SOLAR



ONSHORE & OFFSHORE WIND



FORWARDING



GENERAL INDUSTRY



MAINTENANCE & INSTALLATION



THERMAL & NUCLEAR POWER PLANTS



# OIL AND GAS

---



## MINIMISING DOWNTIME IS KEY

The oil and gas sector is one of the core markets for Sarens. It involves the construction, refurbishment and maintenance of oil & gas plants and refineries, as well as the modularisation and assembly of heavier components. Site conditions often vary so when executing the lift of a 1.300 ton reactor, a 125 metre splitter column or the transport of a 15.000 ton topside module, we always provide efficient and tailor-made solutions. Our continuous efforts in the technical development of lifting and transportation equipment enable us to further minimise the downtime of a plant.

# MINING

---



## FULL-SCOPE PROJECT MANAGEMENT

Today's large-scale metallurgic refineries are built by assembling process and pipe rack modules, manufactured around the world at module yards. These modules are shipped by heavy cargo ships to the site location. Sarens provides module handling and load-in services on the manufacturing yard, load-out and inland transport services to often remote locations, heavy lifting and installation works on site.

# CIVIL WORKS

---

## RAPID MOBILISATION REDUCING ANY POSSIBLE DISRUPTION

Over the past decade, Sarens has been involved in many civil construction projects around the globe, providing transport and lifting activities for steel assembly work and the installation of complex roof instructions for soccer stadiums, event arenas and industrial buildings. Sarens also has a rich history in accelerated bridge replacement and installation, using a combined set of alternative rapid replacement technologies. A quick mobilisation is the main challenge to avoid disruption on your project. This is where Sarens stands out: flexibility and speed.





# OFFSHORE & MODULE YARDS

OUR KEY MARKETS



Sarens has been a partner to the off shore and module yards industry for many years. Our activities cover the load-in, load-out and assembly of oversized and heavyweight modules, including general lifting services on off shore construction yards and for the FPSO (floating, production, storage and offloading) industry.

# SOLAR

---



## INCREASED HEIGHT, COUPLED WITH REDUCED GROUND AREA

Although the solar industry is still in its developing stage, Sarens has already gained profound experience in the construction of solar towers. For the construction of these towers, Sarens uses its heavy luffing tower cranes which consist of a modular system and can reach up to considerable free standing heights with different jib lengths. As these types of cranes only require a small ground area, it makes them an ideal solution for solar projects.

# ONSHORE & OFFSHORE WIND

OUR KEY MARKETS



LIFTING SERVICES, COMBINED WITH  
ON SHORE AND OFF SHORE LOGISTICS

Sarens Wind participates strongly in the development and continuous growth of the renewable energy industry. We have been a partner in installing some 20.000MW of wind energy around the globe.

We provide:

- On and offshore wind farm installation
- Wind turbine maintenance
- Blade repair and change-out
- Customised engineering solutions
- Wind farm decommissioning
- Project Management
- Crane rental only

All of our projects are fulfilled with SHEQ (Safety, Health, Environment, and Quality) standards. For Sarens, safety is paramount. We aim to provide a safe and healthy working environment for our employees, contractors, and visitors.

# FORWARDING

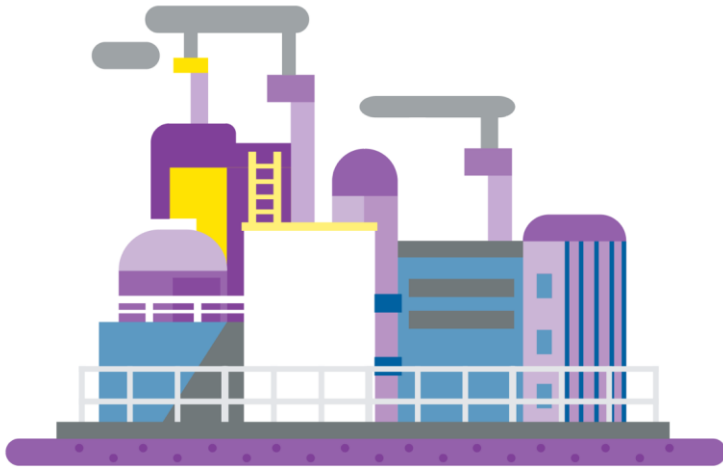


With a vast array of global projects, Sarens has been the business partner of choice for land/marine forwarding since almost its very first steps as a Group.

# GENERAL INDUSTRY

---

OUR KEY MARKETS

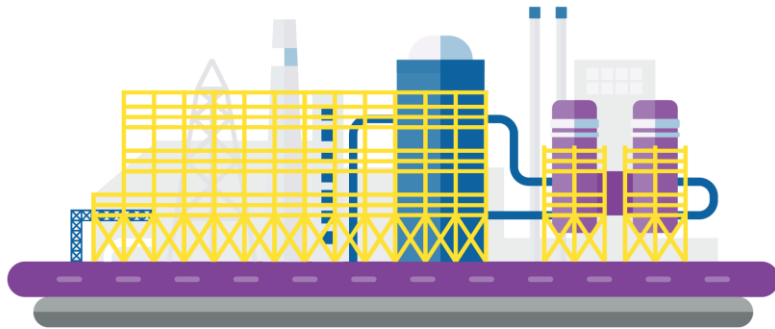


Our broad experience across all sectors makes us the ideal partner for heavy lifting and engineered transport in the general industry.

# MAINTENANCE & INSTALLATION

---

OUR KEY MARKETS



A large volume of our business comes from the maintenance and montage industry. We serve all sectors on all continents with the varied capacities of our different cranes and special trailers.

# THERMAL & NUCLEAR POWER PLANTS

OUR KEY MARKETS

## THERMAL POWER

MAXIMISING SAFETY WHILST MINIMISING PROJECT RISKS AND COSTS

For many years, Sarens has been providing a total concept approach for gas- and coal-fired power plant projects, including heavy lifting, engineered transport and maintenance services. New lifting and transport techniques are constantly being introduced to enable the transportation, removal, assembly and installation of large and heavy components. Sarens is also experienced in the installation of rotating equipment such as turbines, generators and transformers.

## NUCLEAR POWER

For nearly 40 years, Sarens has been a valued partner of nuclear power plant owners and operators around the world, supporting contractors and critical plant component manufacturers throughout plant life cycle activities. From new construction to major component replacements, plant upgrades through to facility decommissioning, Sarens has safely executed the most challenging of projects. With industry-leading engineering expertise, specialised rigging equipment and a highly skilled workforce, Sarens continues to offer the nuclear power sector creative and cost effective solutions, delivering high-quality results under demanding time and operational constraints.

# OUR FLEET & EQUIPMENT

## CRANES



HYDRAULIC  
CRANES



LATTICE BOOM  
CRANES



HEAVY LUFFING  
TOWER CRANES

## TRANSPORT



CONVENTIONAL  
TRAILERS



MODULAR TRAILERS



SELF-PROPELLED  
MODULAR TRAILERS

## SPECIAL EQUIPMENT



BARGES



TWIN BARGES



MODULAR BARGES



GANTRIES



JACKING



STRAND JACKS



SKIDDING



# SPECIAL FEATURES OF OUR FLEET

## MAINTENANCE

### Decentralized knowledge centers

- 400 people worldwide to secure maintenance on equipment in 50+ countries

### Centralized maintenance system

- Follow-up in Sarens ERP system combined with live data from the equipment

## BLACK BOXES PROVIDING LIVE DATA

- Status safety systems on cranes
- Running hours engines
- Information on operator behavior
- Wind speed data
- Location of equipment

# SPECIAL FEATURES OF OUR FLEET

FLEET & EQUIPMENT

MAINTENANCE

LIVE DATA

**SARPLAN MOBILE**

1. Get the Sarplan Mobile App from Google Play Store *(iOS coming soon)*
2. Login with your Sarens credentials
3. Scan QR of Sarens equipment

Now you can check:

- most recent properties
- equipment documentation
- maintenance status

**ALL IN 1 APP  
ANYTIME  
ANYWHERE**

# HYDRAULIC CRANES

- Able to drive on public roads
- Short mobilization and set-up time
- High level of mobility and versatility
- Capacity: from 5 up to 1200T



# ALL TERRAIN CRANES

- Can be used on public roads as well as off-road
- Maximum mobility and versatility
- Crane capacities in Sarens fleet: 30 to 1.200T



# TRUCK MOUNTED TELESCOPIC CRANES

- Telescopic boom mounted on a truck designed for frequent and long-distance travel
- Efficient road transport and fast mobilization
- Versatile and good manoeuvrability
- Crane capacities in Sarens fleet: 30 to 80T



# ROUGH TERRAIN CRANES

- Used on rough terrain
- Compact design and versatile
- Rugged axles and machine super-structures
- Withstand challenging environments
- Excellent gradeability
- Can drive with small loads
- Crane capacities in Sarens fleet: 12 till 150t



# PICK & CARRY CRANES

- Can drive with load
- Steering flexibility for moving in tight spaces
- Work ready, no outriggers needed
- Crane capacities in Sarens fleet: 5 to 33T



# MOBILE FOLDING CRANE

---

- Is a tower crane that can drive on public road
- The tower is completely folded
- Maximum mobility, easy to rig the crane





# TRUCK CRANE

- Substructure consists of multiple axle truck and
- Can drive on public roads
- The upper structure consist of boom sections like a Lattice boom crane
- Less assembly time required on site compared with a Lattice boom crane
- Truck-mounted chassis allows moving the base crane
- (Without load) on its own
- Great flexibility (transport and erection)
- Large outrigger base gives high lifting capacities
- Capacities: 130 to 750T



# LATTICE BOOM CRANES

- Transported by truck and assembled on site
- Suitable for heavy loads
- Adjustable boom length
- Truck mounted, pedestal or crawler
- Capacity: from 50 up to 3200T



# PEDESTAL CRANE

- Star-type outriggers instead of crawlers for
- Stationary projects
- Lower counterweight requirements compared to
- Other cranes
- Reduced transportation weights thanks to quick
- Connection (splitting superstructure and center frame)
- And removable winches
- Short set-up time, low operational cost
- Capacities: 750 to 2.000T



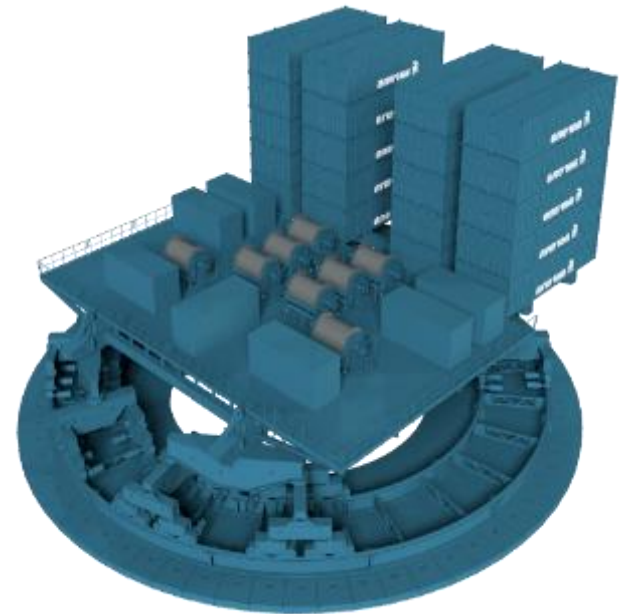
# TELESCOPIC CRAWLER CRANE

- Crane on crawlers with telescopic boom
- Fast set-up and mobile with a load
- Capacities: 16 to 220T



# RING-BASED CRANES: THE SGC SERIES

- Versatile and reliable heavy lifting machines with high load moment
- Limited footprint and low ground bearing pressures due to ring structure
- Flexible worldwide transportation in cost-effective standard shipping containers
- Counterweights of locally-sourced material which greatly reduces shipping costs
- On site flexibility: reliable and easily operated hydraulic winches provide excellent and efficient load raising and lowering
- Designed to accommodate the heavy lifting requirements for refinery, oil and gas, mining, offshore platform and third generation components for nuclear power plants
- Capacity of up to 5000T



# RING-BASED CRANES: THE SGC SERIES



**SGC-250**  
Launched 2018  
Working in the UK  
Hinkley Point Project



**SGC-140**  
Launched 2017  
Working in Kazakhstan  
TCO Project



**SGC-120**  
Launched 2011  
Working in the UK  
Offshore Project



**SGC-90**  
Launched  
2020

# SGC-250 IN ACTION AT HINKLEY POINT PROJECT

---



# HEAVY LUFFING TOWER CRANES

- Modular construction
- Free standing heights
- Very limited ground area
- Shipped by standard truck
- Capacity: from 150 up to 2400 ton-meter





# CONVENTIONAL TRAILERS

- Solution for long-haul heavy road transport
- High loading capacity
- Modular design
- Pulled by prime-movers
- Extra traction In combination with power booster trailer and powerpack
- >10km/h possible



# SELF-PROPELLED MODULAR TRAILERS

- Designed for moving heavy loads
- Limitless configuration options
- Wireless Remote controlled steering
- Precision positioning with different steering programs
- Shipped on standard flat rack containers
- Capacity: from 34 up to 48T per axle line



# BARGES

---

- Lifting and transport operations on water
- Seagoing barges
- Twin barges
- Containerized modular barges to form different configurations



# GANTRIES

## FIVE DIFFERENT TYPES

Consists of push cylinders



**HYDRAULIC GANTRY**

Tower structure combined with strand jacks



**SARENS MULTI LIFTING TOWER**

Freestanding tower structure with climbing system



**SARENS CLIMBING TOWERS**

Multifunctional lifting system of hoist towers and hydraulic jacks



**SARLIFT**

Tower structure combined with a push hydraulic system



**SARTOWER**

# JACKING

- Alternative lifting equipment for cranes when lack of space on assembly site
- Hydraulic cylinders with fixed jacking steps from 100 to 1000mm
- Elements added when cylinder is energized
- In-house designed
- Wide range of combinations possible
- Capacity ranging from 100 up to 5000T/tower



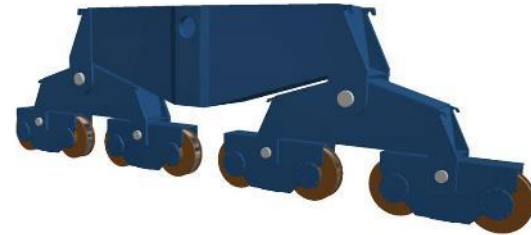
# STRAND JACKS

- Alternative lifting equipment for cranes
- Hydraulic cylinders combined with steel wires lift the heavy load
- Capacity ranging from 15 to 850T



# SPECIAL EQUIPMENT

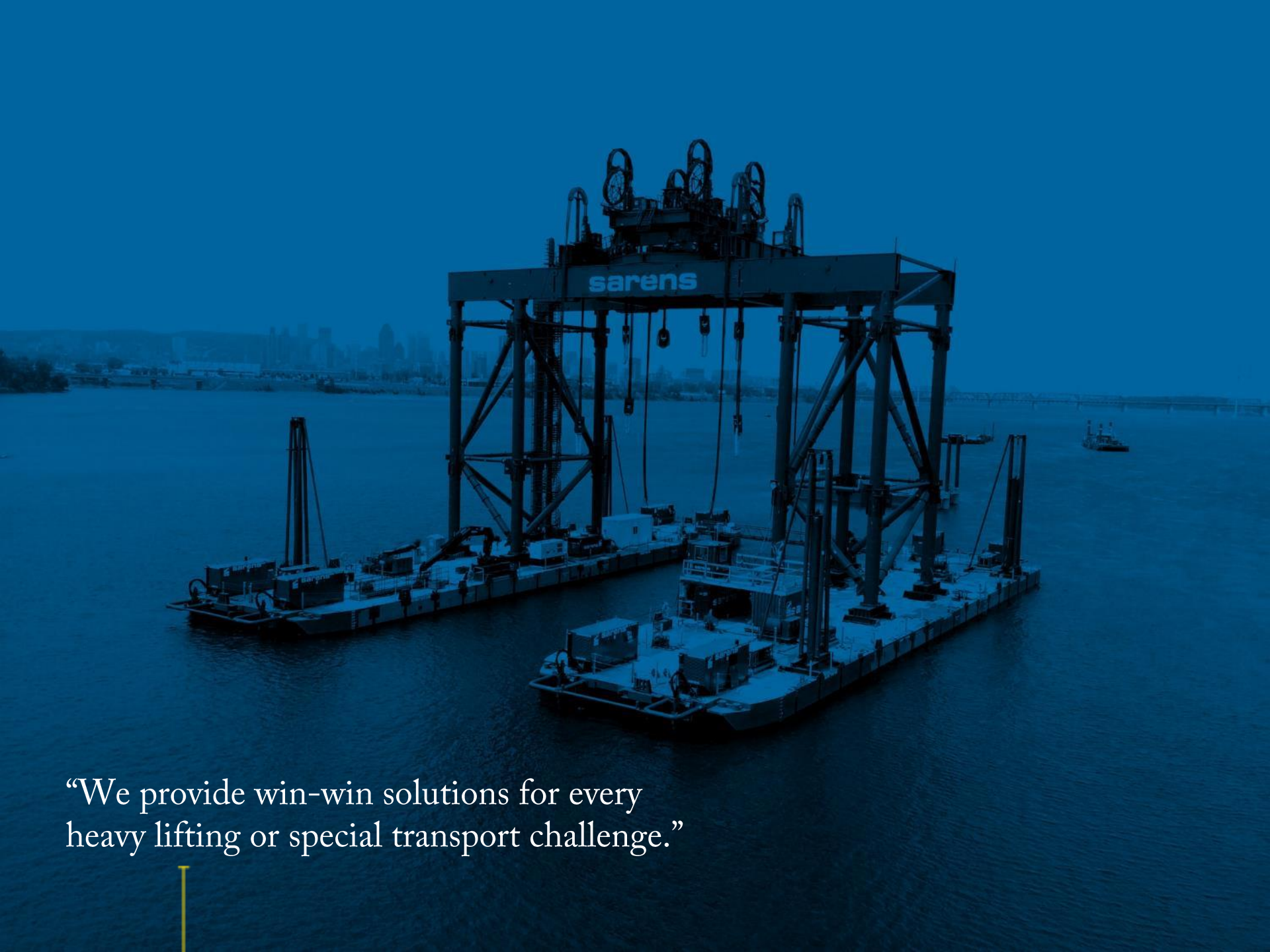
- Horizontal moving system to push or pull a load
- Winching and mooring systems from 3T to 125T
- Ballasting systems from 100 to 600 T/h
- High precision weighing system from 20T to 600T with hydraulic jack
- Different rail bogie systems for straight and circular movements
- Modular wheeled frame with jacks for transport of heavy loads along train tracks



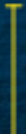


“We empower our people  
to take responsibility.”





“We provide win-win solutions for every heavy lifting or special transport challenge.”






“Sarens has one of the largest fleets in the world.”




“At times, the shuttle wings were over peoples’ lawns; literally an arm’s reach of this amazing piece of history.”



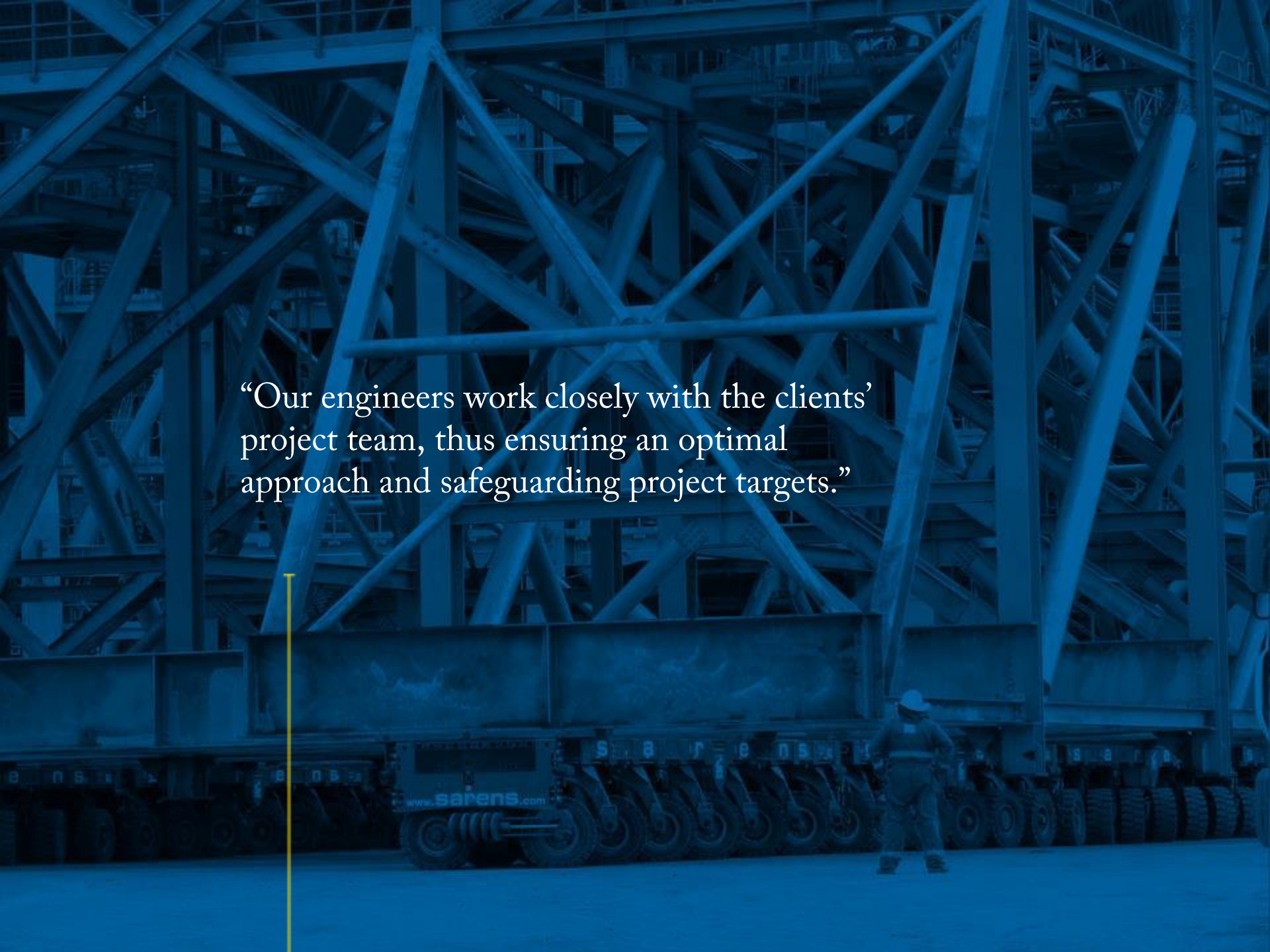


“Our highly qualified and problem-solving team members, make the difference.”

A vertical yellow line is positioned below the text on the left side of the image.

A large-scale industrial construction site, possibly for a power plant or refinery. The central focus is a massive, horizontal cylindrical component, likely a boiler or heat exchanger, being transported or positioned on a concrete pad. Several large cranes are visible, some with their booms extended over the structure. In the background, there are tall, vertical industrial towers and various scaffolding and construction equipment. The entire scene is overlaid with a semi-transparent blue filter. A thin yellow vertical line is positioned in the lower-middle part of the image, extending from the bottom edge up to the text.

“Detailed planning and optimum project coordination are key to minimize any possible down time.”



“Our engineers work closely with the clients’ project team, thus ensuring an optimal approach and safeguarding project targets.”

www.sarens.com



“Our wide range of equipment can be adjusted to different site conditions and very restricted areas.”



“While maximizing safety, we focus on minimizing project risks and costs. This makes us a reliable partner.



“Our global presence and broad experience enables us to provide clients with the most cost-effective solution.”



“We offer our offshore wind clients full scope project management: from engineering and transport over storage to lifting.”





“Although this market is still in its developing stage, we have already gained profound experience in the construction of solar towers.”



“As heavy lift partner for offshore projects for more than, 30 years, we offer the best technical solution in accordance with the highest offshore standards.”



“We are committed to meet clients expectations and make sure, every employee returns home safely.”





“We moved our first bridge in the early ’80s. Today we execute an average of 70 bridge projects each year, using rapid replacement technologies and cranes.”

“We provide efficient and tailor-made solutions for all heavy lifting and special transport needs.



# SPECIALIST OF THE EXTRAORDINARY

---

60 years of experience

Worldwide presence

Unwavering commitment to safety

Solution-driven approach

Highly skilled professionals

Extensive fleet of equipment

Full-scope project management

Cost-efficient planning

In-house engineering creativity

Operational excellence





## NAME PRESENTER

Job title

Address

Mail

Phone

[www.sarens.com](http://www.sarens.com)

